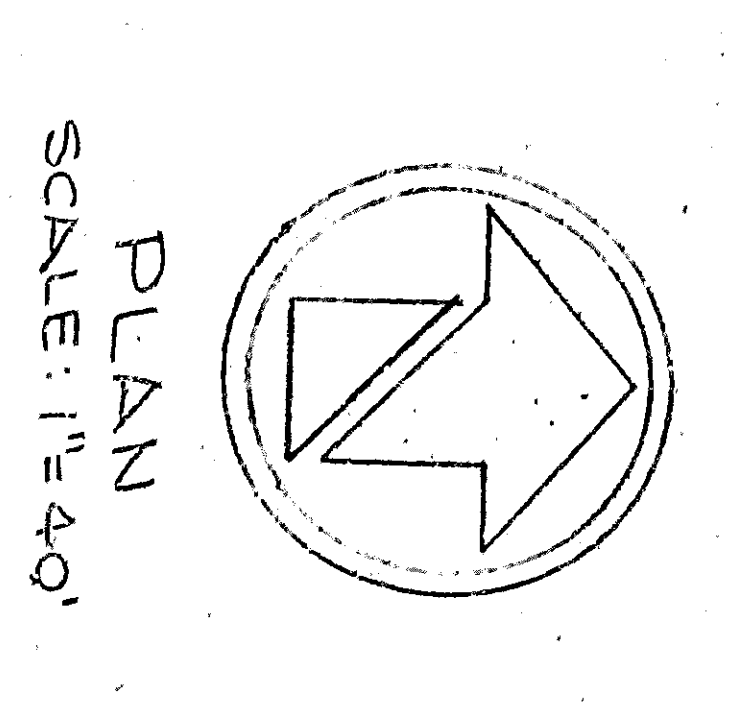
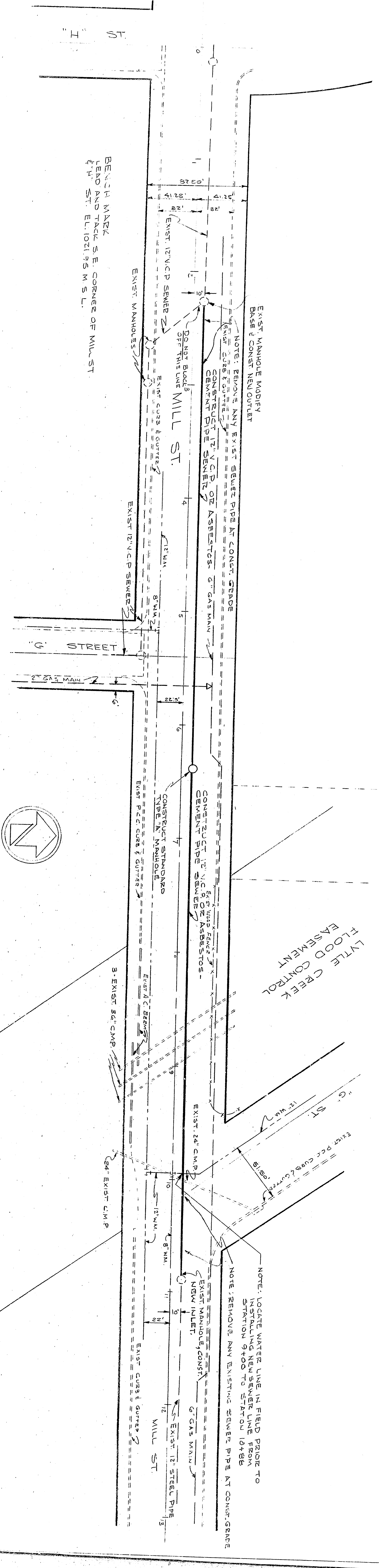
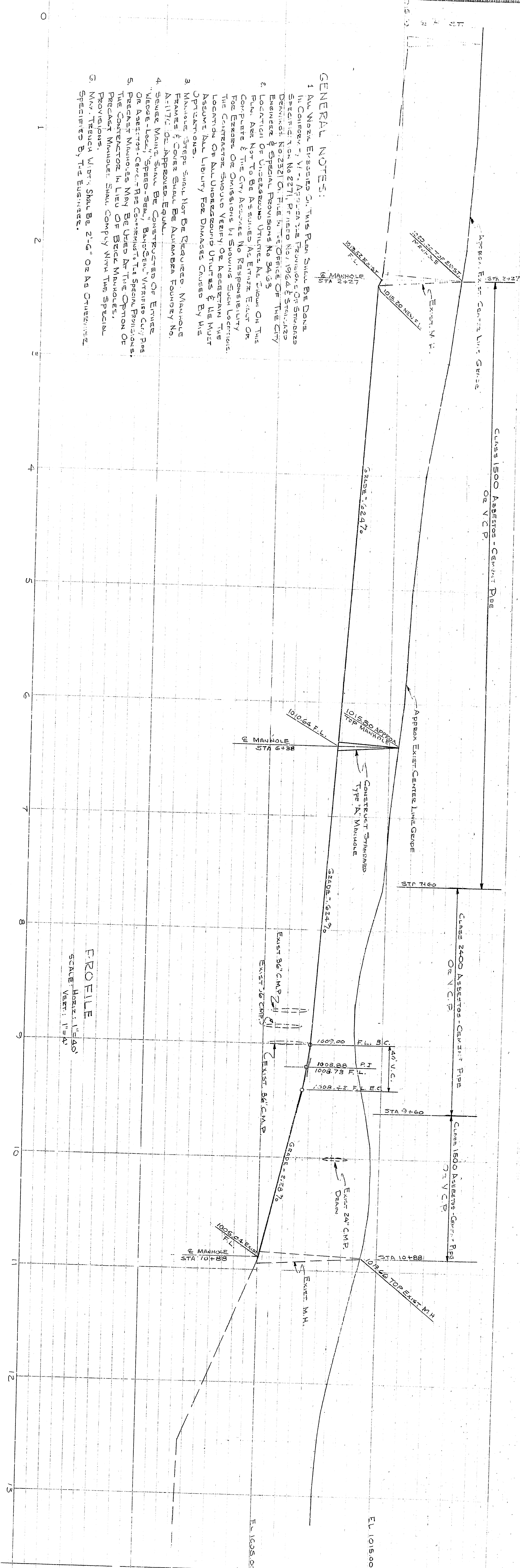


- GENERAL NOTES:**
1. All Manhole Erections On This Plan Shall Be Done In Accordance With The Standard Specifications For Sewerage & Waterworks, Edition 1962, Part 1, Section 201, Paragraph 1.01, and the City Engineer's Special Provisions No. 3A.13. The City Engineer's Office Shall Be Consulted For The Location Of Unexcavated Utilities At Close To The Plan. All Work To Be Done Shall Be Done In Accordance With The City Engineer's Office. No Responsibility For Construction Or Omissions In Showing Such Locations Shall Be Assumed By The Contractor. The Contractor Shall Verify The Location Of All Utilities Before Commencing Work. The Contractor Shall Notify The City Engineer's Office In Writing Before Commencing Work. The Contractor Shall Notify The City Engineer's Office In Writing Before Commencing Work.
  2. Manhole Erection Shall Be Done In Accordance With The Standard Specifications For Sewerage & Waterworks, Edition 1962, Part 1, Section 201, Paragraph 1.01, and the City Engineer's Special Provisions No. 3A.13. The City Engineer's Office Shall Be Consulted For The Location Of Unexcavated Utilities At Close To The Plan. All Work To Be Done Shall Be Done In Accordance With The City Engineer's Office. No Responsibility For Construction Or Omissions In Showing Such Locations Shall Be Assumed By The Contractor. The Contractor Shall Verify The Location Of All Utilities Before Commencing Work. The Contractor Shall Notify The City Engineer's Office In Writing Before Commencing Work.
  3. Manhole Erection Shall Be Done In Accordance With The Standard Specifications For Sewerage & Waterworks, Edition 1962, Part 1, Section 201, Paragraph 1.01, and the City Engineer's Special Provisions No. 3A.13. The City Engineer's Office Shall Be Consulted For The Location Of Unexcavated Utilities At Close To The Plan. All Work To Be Done Shall Be Done In Accordance With The City Engineer's Office. No Responsibility For Construction Or Omissions In Showing Such Locations Shall Be Assumed By The Contractor. The Contractor Shall Verify The Location Of All Utilities Before Commencing Work. The Contractor Shall Notify The City Engineer's Office In Writing Before Commencing Work.
  4. Sewer Main Shall Be Constructed Of Either "Victrolite" Or "Vitrified Clay Pipe" With "Vitrified Clay Pipe" Or "Asbestos-Cement" Pipe. The Contractor Shall Notify The City Engineer's Office In Writing Before Commencing Work. The Contractor Shall Notify The City Engineer's Office In Writing Before Commencing Work.
  5. Precast Manholes May Be Used In Lieu Of Brick Manholes, Provided They Meet The Requirements Of The Standard Specifications For Sewerage & Waterworks, Edition 1962, Part 1, Section 201, Paragraph 1.01, and the City Engineer's Special Provisions No. 3A.13. The City Engineer's Office Shall Be Consulted For The Location Of Unexcavated Utilities At Close To The Plan. All Work To Be Done Shall Be Done In Accordance With The City Engineer's Office. No Responsibility For Construction Or Omissions In Showing Such Locations Shall Be Assumed By The Contractor. The Contractor Shall Verify The Location Of All Utilities Before Commencing Work. The Contractor Shall Notify The City Engineer's Office In Writing Before Commencing Work.



PLAN  
SCALE: 1"=40'

APPROVED: *[Signature]* 1964  
 CITY ENGINEER NO. 3433  
 DEPARTMENT OF ENGINEER  
 CITY OF SAN BERNARDINO  
 MILL STREET  
 SEWER EXTENSION  
 SHEET 1 OF 1  
 CHECKED BY: *[Signature]*  
 DRAWN BY: *[Signature]*  
 FROM: "A" SITE POINT "A" ST. POINT  
 FROM: "B" SITE POINT "B" ST. POINT